



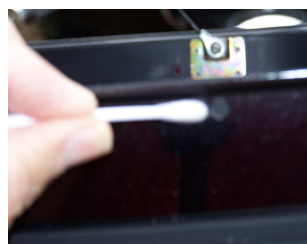
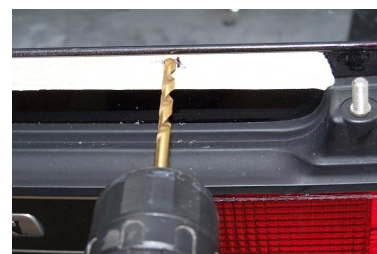
Installing the Ride Time Technology RTFX146 Multifunction Light Bar



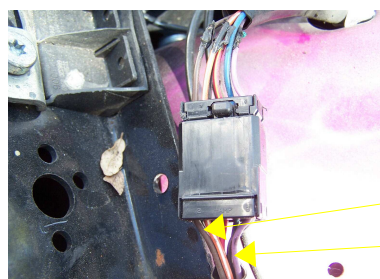
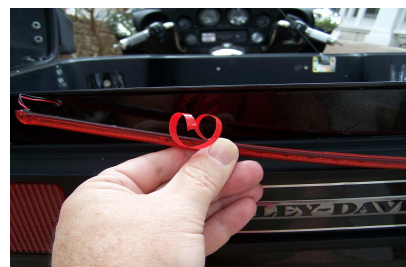
To install the RTFX Light Bar, thoroughly clean the area where the light bar will be installed. Apply a strip of masking tape to the area. Place the light bar against the tape (do not remove the protective covering from the mounting tape on the back of the light). Locate and mark the ends of the light bar on the masking tape.



Drill two small holes (approx 1/8 inch) through the tour pak at the marked location. Remove the masking tape and apply adhesion promoter to **ONLY** the area where the light bar will contact the rear of the tour pak. Note: a Q-Tip works well as an applicator. Run the wires through holes drilled in the tour pak. Remove the protective strip on the rear of the light bar. Press the light bar firmly against the tour pak.



This Light Bar has three light segments. They consist of a 65 LED center segment and two 25 LED end segments. Each of the three segments is individually wired. As a result, the light can be installed in a manner that allows for a center brake light and left/right turn signals.



To use the end segments as turn signals, the red (+12VDC) wires for the end segments are connected to the left and right turn wire under the seat. These wires are easily identified by locating the wire cable that enters the rear fender. Normally, the right turn wire is brown or tan. The left turn wire is violet.

To connect the center LED segment to the brake light wire, locate the red with yellow stripe wire in the turn pack. Splice and solder or use a no splice connector to make the connection.

Alternately, the three segments can be used as a single 115 LED light by combining the three red power (+12VDC) wires. The three black (ground) wire are combined and connected to a ground wire on the bike.

Included with this kit is a dual intensity wiring adapter. This adapter has a short red output wire. The long input wires are red and orange. This adapter can be used to provide run and brake functions to the center LED segment. If all three segments are connected together into one light, the dual intensity adapter can provide run and brake functionality to the entire light. To connect the dual intensity adapter, splice or connect the long red wire from the adapter to a brake light wire (in the tour pak, this wire is red with a yellow stripe). Connect or splice the orange wire from the adapter to a run light wire (in the tour pak this wire is blue. Connect the short red wire from the adapter to the red wire or wires from the light bar.